

# AVCA Newsletter



**Arapuni Village**  
COMMUNITY ASSOCIATION

**Village 'seniors' ...**  
**past the age of**  
**children at home?**



Then come and have a free  
afternoon tea on AVCA at  
**RHUBARB CAFÉ**  
**Wednesday, 1:30pm**  
**14 December**

If you would like to attend this event, please RSVP to:

[arapunivillage@gmail.com](mailto:arapunivillage@gmail.com) or pop a note in the Hall suggestion box

## FUNDING / GRANT UPDATE:

### Automatic External Defibrillator Training Session

NOW INSTALLED - Have you seen our new Automated External Defibrillator at Rhubarb Café???

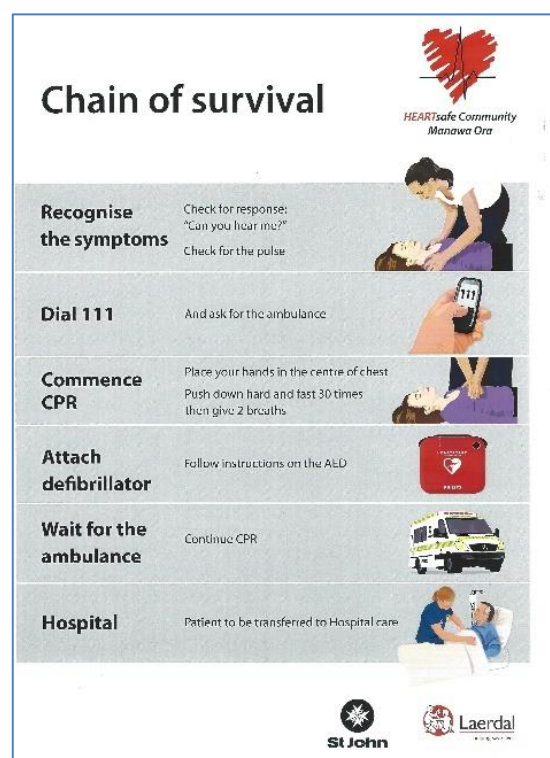
The HeartSine Samaritan PAD 350P AED is intuitive and simple to use by anybody who responds to a medical event. To access the AED in an emergency, call 111 and give them the AEDs location (Rhubarb Café, 6 Arapuni Rd). They will then give you the pin code to access the secure box, provide support for administering CPR and send an ambulance. If you want to check it out for yourself, you can view the instructional videos online here: <https://uk.heartsine.com/aed-training-videos/>.

Henry Strong from HEARTSafe Cambridge will be presenting the Three Steps for Life System, including a CPR and AED demonstration as well as practicing on manakins and AED trainers.

**Monday 28<sup>th</sup> November - 6.30pm**  
**at the Arapuni Hall**

Hopefully the AED goes many years without being needed but it's great to know it's there in an emergency! Thank you again, Bryan and Louise, for allowing it to be mounted at the Café, especially with your security cameras to keep watch.

This community AED project was coordinated by AVCA and made possible with funding from South Waikato District Council, Rural Community Trust, HEARTSafe Cambridge, Rotary Putāruru, Mr Wayne McDonald and Jo and Leonie Norman.





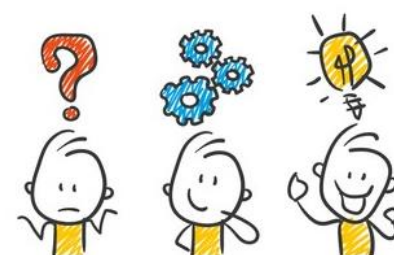


## Committee Volunteers Wanted

We currently have 5 people on the committee and are always open to more volunteers.

If you have skills with **Admin**, **Civil Defence** or **Web pages** and would like to join the committee, please let us know. If these don't float your boat, then please still consider joining - many hands make lighter work!

Contact any of us if you would like to attend a meeting to see what we do first.

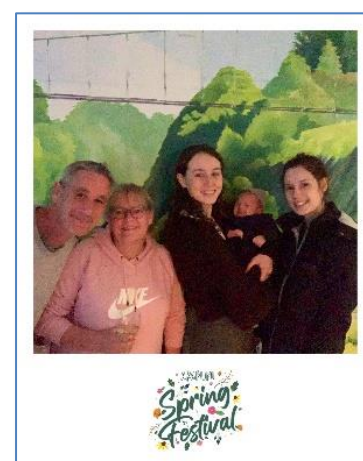


## Membership:

There is an opportunity for villagers to have input in what they would like to see happen in our village. AVCA is not the only way you can contribute but we are developing links in the community, initiating projects and successfully fundraising for these activities and would like to create representation in our group. All are welcome. Membership is just \$10 a year. If you would like to join the Arapuni Village Community Association, please contact one of the committee members. Our contact details are on the back of this newsletter.

## Spring Festival

This Spring AVCA hosted our first **SPRING FESTIVAL**. Saturday the 3<sup>rd</sup> of September dawned **cold** and drizzly, but that didn't dampen our community spirit. The Hall looked fabulous decked out in hand-made bunting, **colourful** balloon garlands and a giant bouncy **CASTLE**. The new heat pumps were installed just in time and really made a difference to the warmth and ambiance. The catering was top-notch and the ice cream truck from **Lulu's Soft Serve** proved popular with both young and young at heart! Live music from **Donna Heke** really was the icing on the cake, taking the event to the next level. Thank you to all those who came along. We hope you had a great night reconnecting with this fabulous community.





## Matariki 2023 – cultural advisor

Matariki is one of the most important Māori celebrations. It signifies the start of the New Year in Māori culture.

Matariki is the name of a star cluster, also known by its ancient Greek name, the Pleiades, that rises in late June or early July. Traditionally, Māori believed if the Matariki stars were very bright in the sky, it was a sign of a warmer season and a more fruitful harvest.



AVCA plans to hold a mid-winter community event to celebrate Matariki in July next year. We would be very grateful to hear from anyone who can provide guidance around cultural safety and ideas for a respectful connection with Māori culture. We hope to apply for funding for the event, so need to get planning underway shortly. Please email us at [arapunivillage@gmail.com](mailto:arapunivillage@gmail.com) to express your interest.

# Twilight BOWLS

**FRIDAY NIGHTS  
FROM 6PM**

Arrive before 6pm to be placed in a team - \$2 entry, all welcome.

Sausage Sizzle (\$2) on nights when Stacey's Kitchen is not operating.

Closing down for Christmas from the 16th Dec until mid-Jan.

Everyone is welcome to the club, please sign in on arrival,  
Social Memberships are \$30, applications are at the Bar.

Any questions contact:  
Kim Watson – 021 031 3723 or Teri Parata – 027 213 1937

## Stacey's Kitchen

*Homestyle cooking shared with you*

*Dates & Menus for upcoming nights at the  
Arapuni Bowling Club*

**25 November**

Dinner: \$15  
Chicken Parmigiana, Chips & Salad

Dessert: \$5  
Cookie Ice Cream Sandwiches  
(Home Made Cookies with Vanilla Ice-Cream)

*Homestyle cooking shared with you*

**16 December**

Dinner:  
\$10 – Loaded American Hot Dog

- Pulled Beef, Cheese, Fried Onions, Sauces of choice
- Vegetarian Sausage, Cheese, Fried Onions, Sauces of choice

\$5 – Bowl of Fries

**Sauces:**  
Tomato  
Mustard  
Sriracha  
Sweet Chili  
Sour Cream

Dessert: \$5  
Vanilla Cheesecake w/ Berry Coulis

*Homestyle cooking shared with you*

## Hall Ramp and Heat Pumps

To the observant among you, you may have noticed that the Hall has a new mobility ramp and two huge commercial heat-pumps. We are extremely grateful to the Hall Committee for facilitating these much-needed improvements and to South Waikato District Council for making it happen. Our Hall truly is a fabulous community asset, and it is great to see investment continuing to ensure its future.

To make a booking for the Hall please contact

Ian Calvert (Hall Coordinator) at:

ian.calvert01@gmail.com or by phone  
on 021 427714 or 07 2120764.





## Petty Crime on the Rise

Some residents have reported a recent rise in vandalism in our community. Petrol has been stolen from rural properties, windows have been broken at the old school, vehicles damaged and most bizarrely, one of our Quails Crossing signs has gone walkabouts!

We recognise that lockdown has left many people feeling isolated and disconnected from their community, which can result in antisocial behaviours, but also leaves others feeling targeted and vulnerable. AVCA will continue to liaise with Neighbourhood Support for advice, however our nearest group in Tokoroa is currently in recess due to ill health.

If anyone here would like to be involved in establishing an Arapuni Neighbourhood Support Group, **please contact AVCA at [arapunivillage@gmail.com](mailto:arapunivillage@gmail.com)**.

Neighbourhood Support Groups enable people to share information, ideas and insights.

A Neighbourhood Support Group will:

- Encourage neighbours to talk to each other
- Share information that will help reduce the risk and fear of crime
- Help foster a sense of community spirit, where everyone is respected and valued
- Educate and empower neighbours to take responsibility for their own safety
- Identify the needs of neighbours and ways to assist each other
- Identify the strengths and skills of neighbours to contribute to solving local problems
- Minimise burglaries and car crime in the local area
- Reduce graffiti, vandalism, violence and disorder
- Support victims of crime
- Enhance the safety features and appearance of the neighbourhood
- Decide on ways to handle any civil emergencies that may occur
- Know when and how to contact Police, other emergency services or support agencies
- Liaise and co-operate with other community groups



## Committee Members 2022/23

Heather Cheer	Chairperson, Funding / Grants
Jill Bradburn	Secretary, Phone Tree, Newsletter
Dean Gittings	Council liaison
Anthony de Reus	
Karleen Dove	

### Contact us at:

- [arapunivillage@gmail.com](mailto:arapunivillage@gmail.com)
- [www.avca.co.nz](http://www.avca.co.nz)
- Arapuni Village Grapevine (FB)
- Hall suggestion box

## Summary of dates for your calendar:

AED Training	Monday 28 November 6.30pm	Defibrillator safety
Yoga	Wednesday and Friday's 6.00pm	bring a mat and \$5
Bowling Club	Fridays from 6.00pm	all welcome
Meals @ Bowling Club	Fridays from 6.00pm	watch the Village Grapevine FB for updates
Senior's Afternoon Tea	Wednesday 14 December 1.30	a fun week-day get-together
Family Fun Day	Saturday 11 February 2023	

**History Group meetings** are held periodically at the Arapuni Rhubarb Café. This group is not run by AVCA but is just for local enthusiasts who want to discuss and collate any material they source.

These are the next planned dates (but could be prone to change)

**20 November 2022**

**12 February 2023**

**26 March 2023**

Arapuni hydro project 1938.  
Whites Aviation Ltd: Photographs.  
Ref: WA-55974-G. Alexander  
Turnbull Library, Wellington, New Zealand. [/records/22721291](https://records/22721291)

